

Mississippi County Electric Cooperative, Inc. is much more than just the “local electric company.” The cooperative business model centers around seven principles: voluntary and open membership; democratic member control; members’ economic participation; autonomy and independence; education, training and information; cooperation among cooperatives; and concern for community. These principles guide Mississippi County Electric Cooperative, Inc. and the state’s other electric cooperatives. As a not-for-profit business, Mississippi County Electric Cooperative, Inc. is motivated to serve local members, not out-of-state stockholders.

The Power to Serve Your Home

Mississippi County Electric Cooperative, Inc. is committed to promoting the efficient use of electricity to meet the growing energy requirements of members. Educating members about the efficient use of energy resources helps members manage energy costs and helps protect natural resources. A comprehensive resource list is available at www.smartenergytips.org. Our goal is to help members save money without sacrificing comfort or convenience.

The Power to Serve As Your Voice

Our business model has guided Mississippi County Electric Cooperative, Inc. through many years of growth and change. And, since the formation of your local electric cooperative, we have worked as advocates for our members. Mississippi County Electric Cooperative, Inc. knows this is more important than ever as we work together to provide you with reliable, affordable electricity in a responsible manner.

The Power to Serve Your Community

More than 75 years ago, the Arkansas’ electric

cooperatives took on a great challenge to not just be in the business of electricity, but to serve the greater purpose of making lives and communities better. Mississippi County Electric Cooperative, Inc. sponsors community fundraising and assists with economic development and service events, while employees devote hundreds of volunteer hours to projects.

The Power to Serve Your Farm and Business

Mississippi County Electric Cooperative, Inc. works with new and existing businesses to support economic opportunities and improve the quality of life throughout its service area. Mississippi County Electric Cooperative, Inc. directors and employees serve as advocates for the farms and businesses with their local, state and federal officials.

The Power to Serve Youth Programs

AECC helps prepare today’s youth for leadership by partnering with 4-H and FFA, and sponsoring the Washington, D.C. Youth Tour and STEM-oriented educational programs.

The Power to Serve Arkansas

Collectively, Arkansas’ local electric cooperatives represent the largest private business in Arkansas and serve more than 1.2 million members. This success is powered by board members and employees who understand and implement the member-owned business model which allows them to focus on serving the needs of their members. This mission and structure is the essence and lifeblood of the electric cooperative business model and community. Employees of Mississippi County Electric Cooperative, Inc. are your friends and neighbors, and your local energy partners.

Your Board of Directors and Officers

Robert Earl Davis
Chairman

Neil M. Burge
Vice Chairman

Diana Holmes
Secretary-Treasurer

Charles E. Brown
Director

David D. Wildy
Director

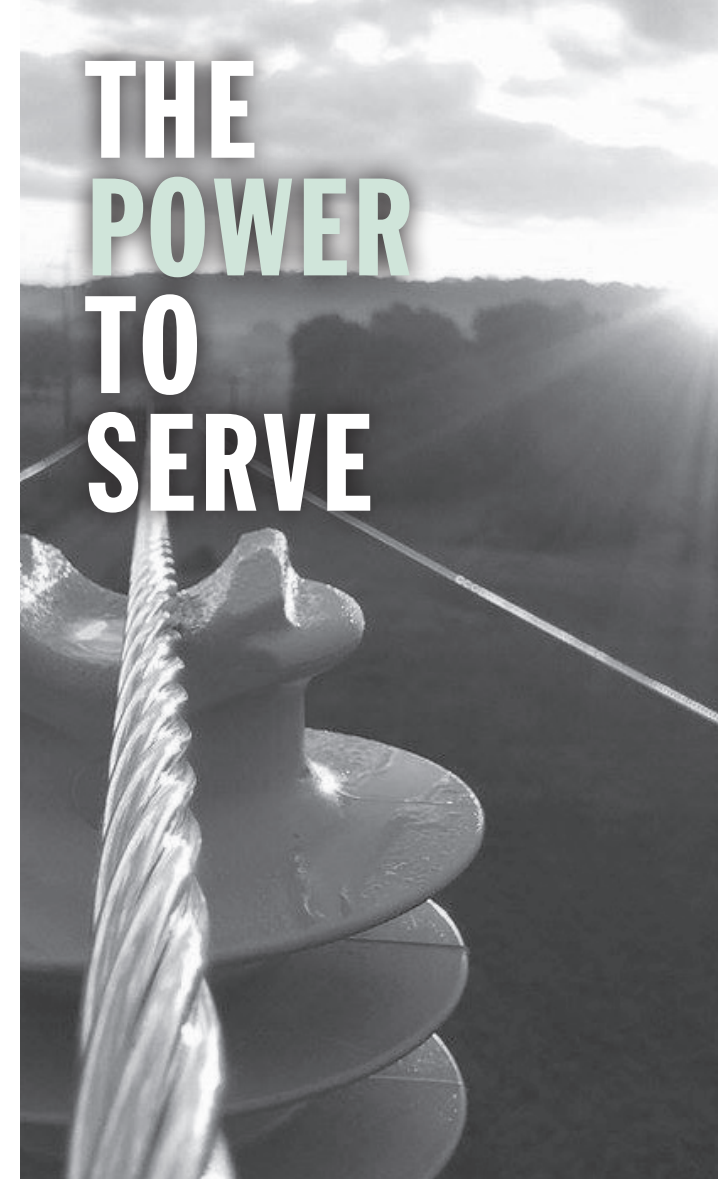


Mississippi County Electric Cooperative, Inc.

A Touchstone Energy® Cooperative 

Authorized provider of
WildBlue Satellite Speed Internet Service

510 North Broadway, P.O. Box 7
Blytheville, Arkansas 72316
870-763-4563 or 800-439-4563



Mississippi County Electric Cooperative, Inc.

A Touchstone Energy® Cooperative 

Condensed Operating Statement

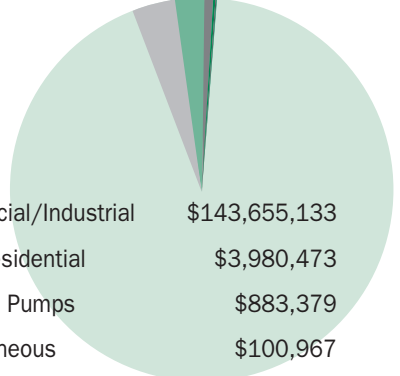
	<u>2017</u>	<u>2016</u>
Operating Revenues	\$158,738,748	\$142,195,549
Power Cost	\$150,802,414	\$134,251,312
Operations and Maintenance	\$4,259,361	\$4,180,494
Depreciation	\$1,661,630	\$1,563,522
Interest and Other Deductions	\$620,051	\$718,089
Total Operating Expenses	<u>\$157,343,456</u>	<u>\$140,713,417</u>
Margins from Operations	\$1,395,292	\$1,482,132
Non-Operating Margins	\$2,763,194	\$1,727,489
Net Margins	<u>\$4,158,486</u>	<u>\$3,209,621</u>

Condensed Balance Sheet

	<u>2017</u>	<u>2016</u>
Assets		
Electric Plant	\$56,193,959	\$53,682,015
Less Accumulated Depreciation	<u>\$13,129,916</u>	<u>\$12,101,109</u>
Net Utility Plant	\$43,064,043	\$41,580,906
Current Assets	\$21,002,363	\$29,353,988
Other Assets	\$39,098,426	\$39,029,282
Total Assets	<u>\$103,164,832</u>	<u>\$109,964,176</u>
Liability and Members' Equity		
Members' Equity	\$71,922,004	\$69,251,828
Long-Term Debt	\$12,982,499	\$13,900,385
Current Liabilities	\$15,009,373	\$23,151,570
Other Liabilities	\$3,250,956	\$3,660,393
Total Liabilities and Members' Equity	<u>\$103,164,832</u>	<u>\$109,964,176</u>

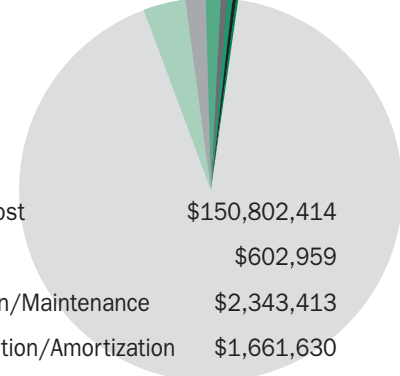
Revenue Dollar 2017

How It Was Earned



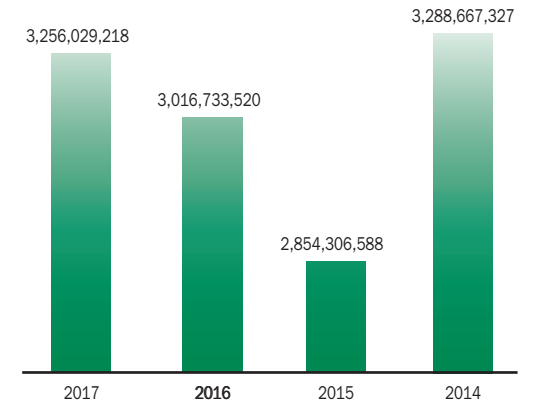
Commercial/Industrial	\$143,655,133	90.50%
Farm/Residential	\$3,980,473	2.51%
Irrigation Pumps	\$883,379	0.56%
Miscellaneous	\$100,967	0.06%
Sale for Resale	\$10,098,393	6.36%
Other Electric Revenue	\$20,403	0.01%
Total	<u>\$158,738,748</u>	100.00%

How It Was Used

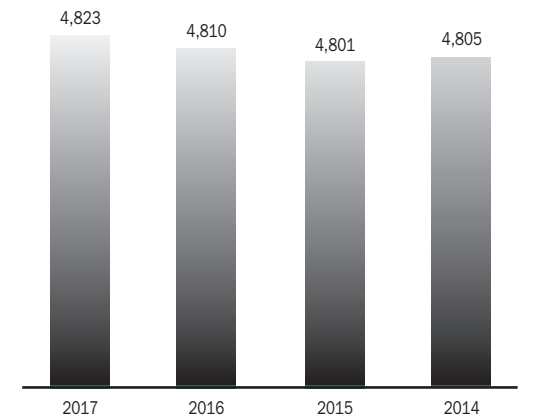


Power Cost	\$150,802,414	95.00%
Interest	\$602,959	0.38%
Operation/Maintenance	\$2,343,413	1.47%
Depreciation/Amortization	\$1,661,630	1.05%
Administrative/General	\$1,282,683	0.81%
Consumer Accounting/ Collecting/Information	\$633,265	0.40%
Miscellaneous Deductions	\$17,092	0.01%
Operating Margins	\$1,395,292	0.88%
Total	<u>\$158,738,748</u>	100.00%

Total kWh Bought by Cooperative Members



Average Number of Meters Billed Per Period



Average Residential Rate Per kWh (¢)

